

Downtown Through The Years

by Bay County Public Library Local History Department





2 Harrison Ave.
1966.
digital234



Bay Honda,
107 W. 4th St., 1964.
35-1-1

Circa 1960s. 114-3-5





Bennett Chevrolet in
1926, 308 Harrison
Ave., presently
Elevation Salon
Downtown.
digital8419



The 400 block of
Harrison Ave.
1947
114-3-5

Coca-Cola Building, 238 W. 5th St.,
circa 1940s. The building is currently
occupied by Ink Trax, Inc. 132-3-1



Cook Motor Co. circa 1940s.
It was located on the 300 block
of Harrison Ave., It is currently
occupied by Elevation Salon
Downtown and the Light Room.
digital3111





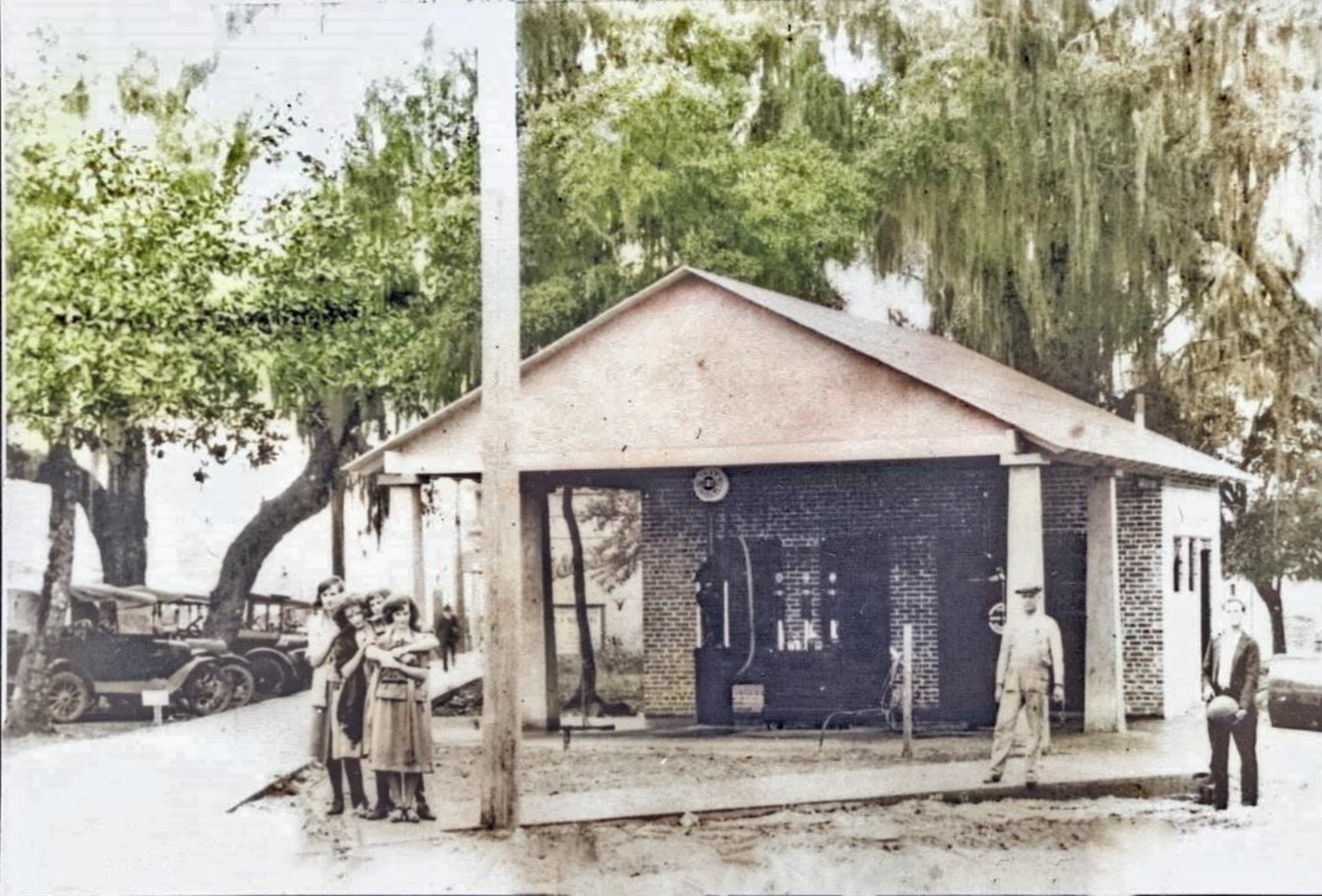
The Gallery of Art,
570 Grace Ave.
1966
It is presently a
parking lot owned
by First Baptist
Church. 225-2-1



Gulf Coast Development Company, 1909.
The building was on the bay shore in the
area of Government St. digital3282



Harries Motor Co.-Studebaker
Authorized Sales & Service, 107 W.
4th St., 1948. digital1258



Panama City Service Station, owned by Cleveland Culbreth, at 315 Harrison Ave., circa early 1920s. Dwight Hicks Real Estate, Inc. is located on the property today. 148-7-3



Boyd Brothers Printing Co.,
circa 1937, 21 Oak Ave.
digital3321

The Panama Theatre, 143
Harrison Ave., 1962 It was built
in 1928 and closed circa 1962.
The building was torn down in
1972 and is now a parking lot.
22-3-1



50th Anniversary Parade for Bay County,
1963. 164-4-2





Circa late 1940s.
220-1-1



The Wilkerson Building, 200 Harrison Ave., was built in 1914. It presently houses Perry & Young. 80-3-1



Southerland General Merchandise, circa 1900s. It was located on Harrison Ave. near Government St. 79-1-3

The 400 block of Harrison Ave.,
1947. 114-3-5



STREET SCENE - PANAMA CITY, FLORIDA

2-B-117





SunTrust Bank clock,
corner of 7th St. and Harrison
Ave. It was taken down & gifted
to the Historical Society of Bay
County in 2019. It sustained
major damage from Hurricane
Michael in 2018. digital6950

Velma's, a clothing store for women, circa 1960. Located at 609 Harrison Ave., it is now a part of First Baptist Church. 63-4-2

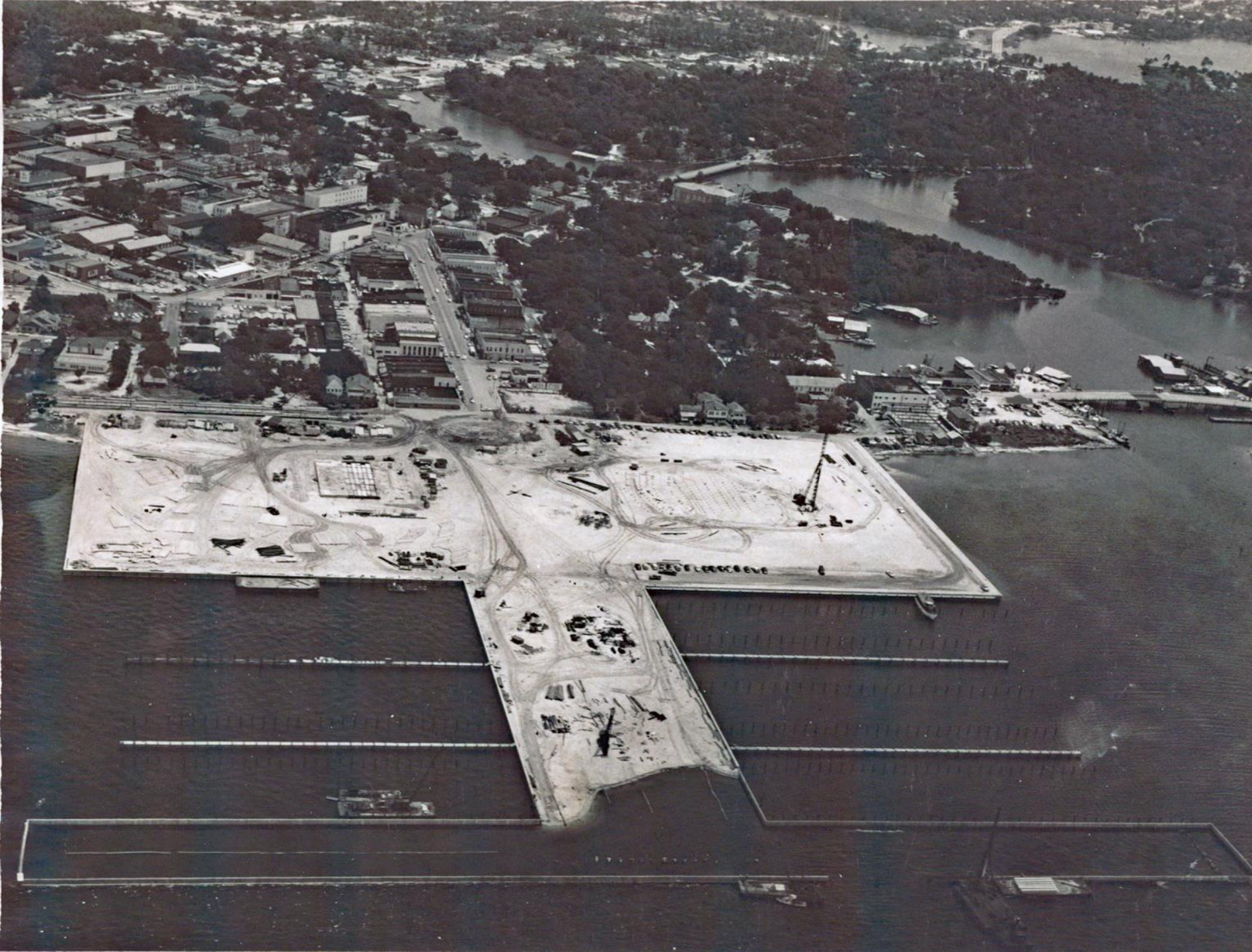




Creel's Mo-Jo Service Station at the corner of Harrison Ave. and 6th St, 1965. Today, it is a parking lot owned by First Baptist Church. 10-1-1



Christmas Parade
at the 300 block
of Harrison Ave.
circa 1940s.
136-2-1



Aerial view of the downtown Panama City Marina during construction, 1958. The marina opened in May 1960. digital3291



Aerial view of Harrison Ave,
circa 1958. In the background
is the marina under
construction. digital9580



Circus Day, corner of
5th and Harrison,
circa 1920. 145-4-1

Dixie Sherman Hotel, located at the corner of W. 5th St. and Jenks Ave., circa 1950. It was built in 1926 and torn down in 1970. It is now a parking lot. digital9586

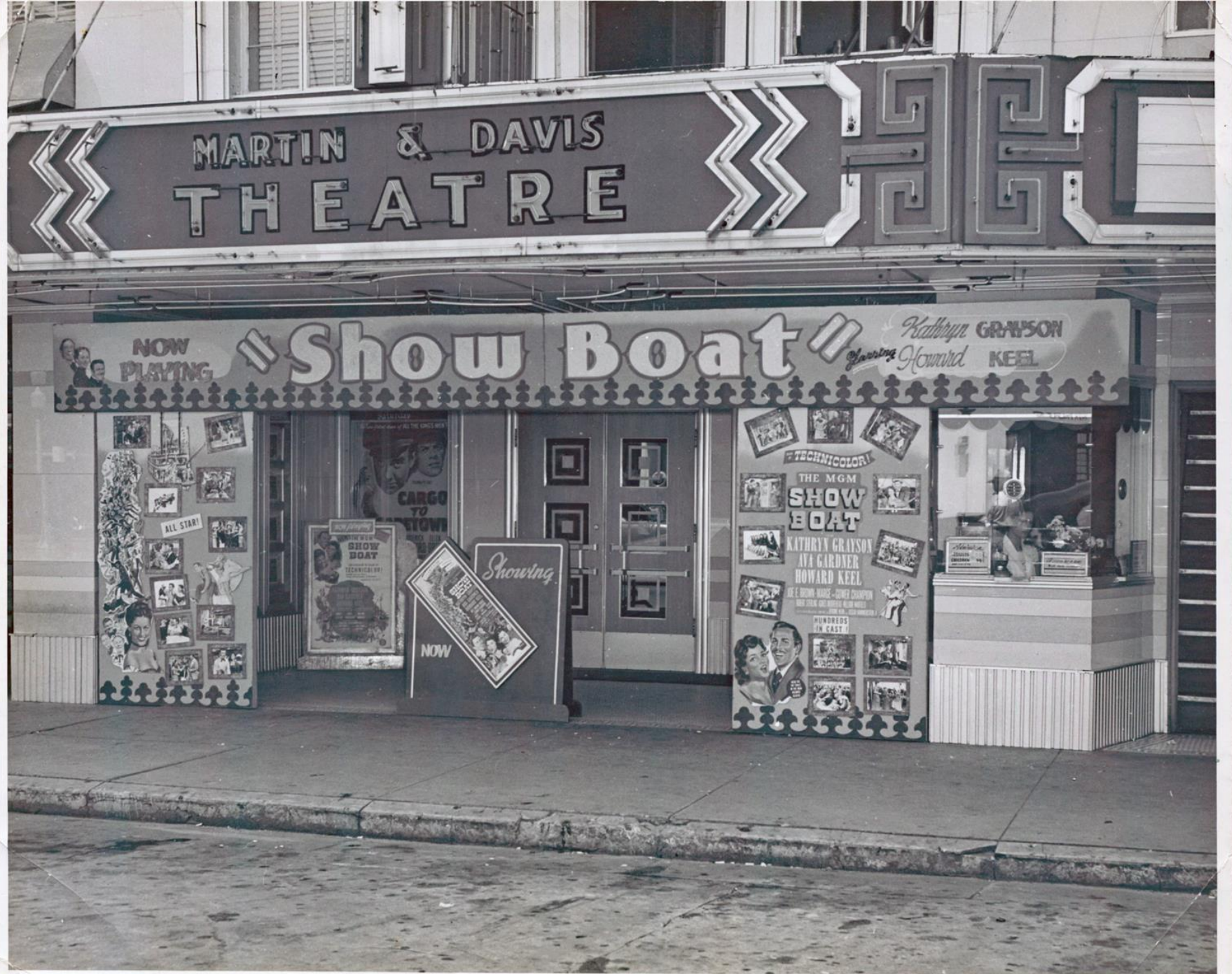




Domestic Laundry, corner of
Grace Ave. and 4th St., 1948.
It is currently an empty lot.
digital6869

Marie Hotel, 12 E. 5th St.,
circa 1970s. The hotel
opened in 1939 and closed
in 1975. The building
remains empty. digital692





Circa 1952. Photography
by J.N. (Jimmie) Jones.
Photo loaned by the
Downtown Improvement
Board. digital1012

The 200 and 300 block of Harrison Ave.,
1925. digital5597



NEW CITY HALL IN DISTANCE.



Parade on Harrison Ave.
circa 1945

Military personnel & Tyndall
band shown at the 400 block
of Harrison.

Photograph gift of Bernice
Shores Harper.
digital7523



Military jeeps lead circa 1945 parade at 400 block of Harrison Ave. Photograph gift of Bernice Shores Harper. digital7522

Members of the Panama City Chamber of Commerce in front of City Hall at the corner of Luverne Ave. and 4th St. in the 1930s. The building presently houses the Panama City Center for the arts. Photograph loaned by Mrs. H. Savely McQuagge. digital162





Intersection of Harrison Ave. and 1st St. (Now Beach Dr.), looking east, circa 1920s. Photo loaned by the Downtown Improvement Board.
digital1002



Intersection of Harrison Ave. and 2nd St. (Now Oak Ave.) looking west, circa 1920s. Photo loaned by the Downtown Improvement Board.
digital1005

Looking south on Harrison Ave.
from 6th St., 1968.
Photography by Bob Hargis.
digital694



The 100 block of Harrison Ave., 1925. 145-5-1

